

The Common Woman CHORUS



WE'RE
STILL
COOKING!!!

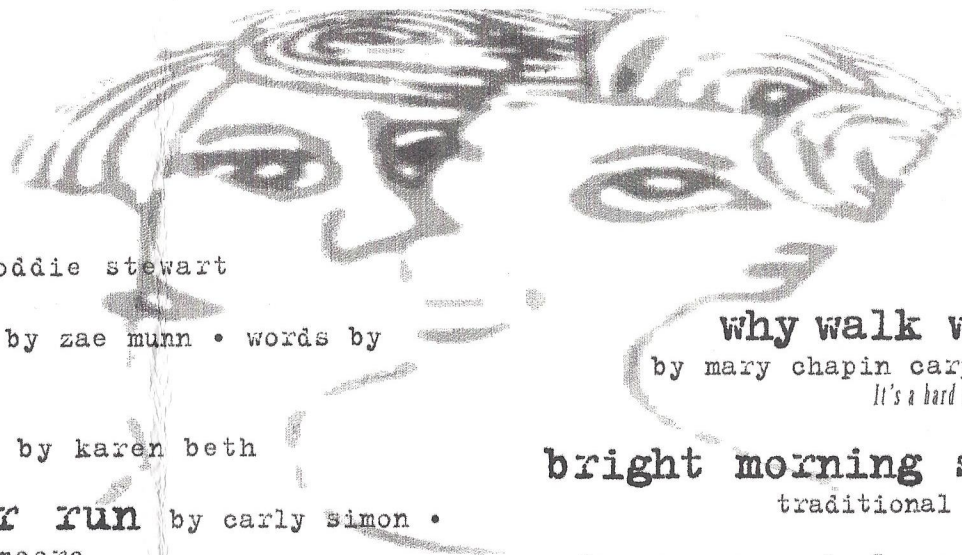
saturday

9 june 2001

8 pm

ENO RIVER
UU FELLOWSHIP

*ACT 1



ACT 2*

opening act toddie stewart

opening act jennie knoop

the stove music by zae munn • words by ann kilkelly

why walk when you can fly?

by mary chapin carpenter • SOLO BY KIM SAGE
It's a hard enough life to be living—why walk when you can fly?

what you need by karen beth

bright morning stars are rising

traditional • arranged by paul siskind

let the river run by early simon •
arranged by j. david moore

how can i keep from singing?

music by robert lowry • words by anne warner

suo gân traditional welsh lullaby • arranged by thomas edward morgan • SOLO BY ERIN O'HARA

• third verse by doris plenn • arranged by robert hugh •
SOLO BY LISA SHUPP

Sleep, child, at my bosom, where you are snug and warm; Mother's arms are fast around you; Mother's love is in my heart. Nothing shall disturb your sleeping. No one will do you harm. Sleep softly, dear child, sleep gently on your mother's breast. Don't be frightened; it's only a leaf that's knocking, knocking at the door. Don't be frightened, it's only a little wave that's lulling, lulling at the seashore. Sleep child, here there's nothing to be afraid of; Smile softly in my embrace at the blessed angels far away.

how could anyone? by libby roderick

• arranged by judi carlson and canyon
How could anyone ever tell you you were anything less than beautiful?

we are by ysaye barnwell

take back the guns by therese edell

• arranged by j. david moore
There's too much killing in too many places. Take back the guns from our land

to the goddess music by jennifer bennett •
words by anne archer

rainbow women/comin' home

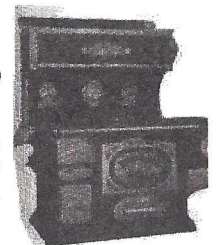
by ruth huber

INTERMISSION.

YUMMY HOME-BAKED REFRESHMENTS
AVAILABLE IN THE LOBBY!!

ONE DAY MY MOTHER PICKED UP A SLEDGEHAMMER
AND POUNDED HER KITCHEN STOVE INTO BITS

HOUSE MANAGER rachel fong CONCERT CHAIRS betty prioux + lisa shupp
INTRODUCER carol bedient BASS michele van note CONGAS judith caseday
DARBUKA + BONGOS beth shulman FIDDLE christine westfall
GUITARS betty prioux + kim sage + angela williams



The CHORUS * THANKS

the eno river unitarian universalist
fellowship • the regulator bookshop •
white rabbit books • creech appliances
• chorus auxiliary members

The Common Woman Chorus is a feminist chorus dedicated to promoting enlightenment and tolerance through song. We perform empowering music that showcases women's lives and experiences.

Our name is taken from a Judy Grahn poem that reads, in part, "A common woman is as common as a common loaf of bread . . . and will rise."

The Chorus began in 1983 and Eleanor Sableski was artistic director from the middle of that year until early 2001, when she transitioned into a well-deserved retirement. The chorus is now directed by long-time member Cindy Bizzell and accompanied by Gail Hafley.

The Chorus has opened for Holly Near, Castlebury and Dupree, Fred Small, and numerous other progressive performers, and has performed with or participated in fund-raising events for the War Resisters' League, the Festival for the Eno, the Crape Myrtle Festival, the Rape Crisis Center of Durham, the National Gay and Lesbian Task Force, NARAL, the Battered Women's Shelter, and the Triangle Gay Men's Chorus.

the Chorus is open to all women who enjoy choral singing

**The Common Woman Chorus • PO Box 51731
Durham NC 27717**

commonwomanchorus@yahoo.com

<http://www15.brinkster.com/commonwoman/index.html>

raising consciousness about the quality of women's
lives and experiences locally and around the world