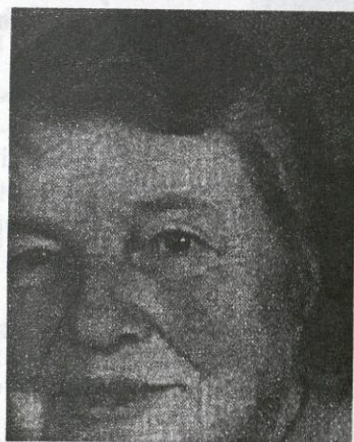


THE COMMON WOMAN CHORUS

says

F A R E W E L L
T O E L E A N O R



After 18 years as the artistic director of the Common Woman Chorus, Eleanor Sableski is retiring. Tonight, the Chorus presents Eleanor's favorite tunes from our many years of feminist musicmaking. Please join the Chorus at a postconcert reception, where we will bid our cherished friend and valued mentor the fondest of farewells.

SATURDAY · 27 JANUARY 2001 · ERUUF

singing with you lyrics by
Holly Near / music by Jeff Langley

we are by Ysaye M. Barnwell

*ACT 1

wood river by Connie Kaldor /
arranged by Willi Zwozdesky / solo
by Jolene Robinson

putting on the mitts based
on lyrics and music by Irving Berlin /
arranged by Kirby Shaw

my favorite things based on
lyrics by Oscar Hammerstein II and music
by Richard Rodgers / arranged by Linda
Spevacek

one lyrics by Edward Kleban /
music by Marvin Hamlisch / arranged by
Anita Kerr

song of long ago by Carole
King / solo by Carolyn Crumpacker

lullaby by Chris Williamson

LIKE A SHIP IN THE HARBOR, LIKE A MOTHER AND CHILD,
LIKE A LIGHT IN THE DARKNESS, I'LL HOLD YOU A WHILE.
WE'LL ROCK ON THE WATER; I'LL CRADLE YOU DEEP,
AND HOLD YOU WHILE ANGELS SING YOU TO SLEEP.

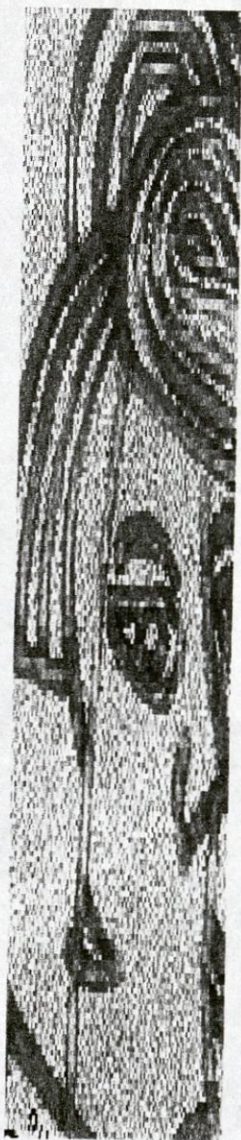
song for elie by Ruth Huber

sky dances by Roy Brown /
arranged by Jennifer Stasack

joyful, joyful by Ludwig von
Beethoven / arranged by Mervyn
Warren / solo by Chris Merrill

**the great peace
march** by Holly Near

intermission



ACT 2*



DIRECTOR
Eleanor Sableski

ASSISTANT DIRECTOR
Cindy Bizzell

EMCEE
Maggie McGlynn

CONCERT CHAIRS
Betty Prioux
Cindy Bizzell

HOUSE MANAGER
Sandy Fitzgerald

INTERPRETER
Maggie Gregory

PIANO
Gail Hafley

GUITAR
Michele Van Note
Betty Prioux

BASS
Jinx Jenkins

DARBUKA
Beth Shulman

TAMBORINE
Judith Casseday

ilu finu traditional lyrics / music
by Linda Hirschhorn

miriam's slow snake dance
by Linda Hirschhorn / solo by
Brenda Smith

burning times by Charlie
Murphy / solos by Erin O'Hara,
Carolyn Crumpacker, & LeAnn Wallace

music in my mother's house
by Stuart Stotts / arranged by
J. David Moore

mood indigo by Duke Ellington,
Irving Berlin, and Albany Biggard /
arranged by Harry Simeone

les moutons by Nancy White
/ solo by Cindy Bizzell / translated
by Margaret Harrelson

comin' into my years by
Betsy Rose / arranged by J. David
Moore

**hand me down my jogging
shoes** by Tom Paxton / arranged by
J. David Moore

song of the soul by Cris
Williamson

SEE LYRICS ON REVERSE SIDE OF PROGRAM INSERT

perfect night by Holly Near
and Jeff Langley / arranged by
J. David Moore

reception !

song of the soul

surprise! **LYRICS**

(SO DON'T LET ELEANOR SEE THIS)

capiche?

AFTER THE CHORUS PERFORMS "SONG OF THE SOUL" ONCE,
WE'LL ASK YOU TO JOIN US IN SINGING THIS NEW, SURPRISE VERSION TO ELEANOR.
LISTEN CLOSELY SO THAT YOU WILL KNOW YOUR PART!

Introduction:

Open your ears that you might know / that we do love our leader so.
She is the teacher who helped us grow / dear Eleanor.

1

Eleanor, dear, we will miss you / so let us kiss you / with one last song.
Here's to our faithful director / we won't forget her.
She is our heart and our soul . . .

chorus:

So let's sing this song / why don't you sing along?
And we can sing for a long, long time / why don't you sing this song?
Why don't you sing along / and we can sing for a long, long time.

2

She brought the voice to our singing / each Tuesday evening
for eighteen years / now that we know she is leaving
Though we are grieving / we sing her our hearts and our souls . . .
(to chorus)

3

Eleanor, we wish you gladness / there is no sadness
You will be happy / follow your heart, love will find you
Truth will unbind you / sing out a song of the soul . . .
(to chorus)

a great big THANK YOU to our loyal **SUPPORTERS***

THE CHORUS WOULD LIKE TO ACKNOWLEDGE & SINCERELY THANK
THE FOLLOWING PEOPLE WHO RESPONDED IN KIND TO OUR RECENT FUNDRAISING APPEAL.

Wendy Visscher / Barbara Pohlman, M.D. / Bill & Betty Hafley
/ Nancy Agnew / Julie Shore / Ginger Heruska / Cindy Gall /
Laurel Degernes / Patience Vanderbush / Gail Harrell / Ruth Hafley

The Chorus is a not-for-profit organization & your contribution is tax-deductible. Individual & corporate donations are vital to our growth & continued well-being & allow us to rent rehearsal space, provide our director with a stipend, & purchase new music. No amount is too small. Please consider making a donation to the Chorus.

If you are interested in supporting us, please consider making a donation at one of the following levels: \$25 Friend, \$50 Backer, \$75 Gem, or \$100 Diamond.

Your check should be payable to the Common Woman Chorus
and mailed to PO Box 51772, Durham NC 27713.

To find out more, visit our Web site at www15.brinkster.com/commonwoman/index.html

community couple in **CRISIS**

Former Chorus member Toddie Stewart & her partner Robin Joseph have struggled since Robin was diagnosed with non-Hodkins lymphoma 2 years ago. But in June, Robin was told that her only hope of staying alive was to have a bone-marrow transplant. Her own stem cells were then transfused into her body & she began the painful process of regrowing marrow from these cells. It's been 4 months since she left the hospital. She is in partial remission, but her medical bills are astronomical. She has health insurance, but treatment has already cost more than 1/2 a million dollars & she must pay 10%. She cannot work for at least 9 more months & her small disability payment does not cover expenses. And she already withdrew all of her retirement savings to pay medical bills from earlier rounds of chemotherapy. Paying the monthly bills now is a struggle.

Please help Toddie & Robin in any way you can. Your emotional support is crucial & will help them through this time of crisis. And your financial support is also desperately needed. Even the smallest amount will help.

The Chorus is accepting donations for Toddie & Robin. Please write "a family of friends" on the memo line of your check and give it to the usher who is holding an "A Family of Friends" envelope.
—with grateful thanks from Toddie and Robin and their Chorus friends

THE COMMON WOMAN CHORUS

IS A FEMINIST CHORUS DEDICATED TO PROVIDING
ENLIGHTENMENT AND TOLERANCE THROUGH SONG

. . . raising consciousness about the quality of women's lives
and experiences locally and around the world . . .

* **THANKS** to eno river unitarian universalist fellowship
· the regulator bookshop · white rabbit books · scott hall and
the durham school for the arts · sherri craig · the chorus auxiliary

The Common Woman Chorus seeks to sing music that highlights the strength and diversity of women's lives and empowers rather than divides or belittles us, and to share with and educate our community through our music. Our name is taken from a Judy Grahn poem that reads, in part, *A common woman is as common as a common loaf of bread . . . and will rise.*

We began singing together in 1983 and Eleanor Sableski has been our artistic director since the middle of that year. We have opened for Holly Near, Castlebury and Dupree, Fred Small, and other progressive performers and have also performed for the War Resisters' League, the National Gay and Lesbian Task Force, the National Abortion Rights Action League, the Festival for the Eno, the Crape Myrtle Festival, the Rape Crisis Center of Durham, and the Durham Dragons. We have also performed a concert with the Triangle Gay Men's Chorus. We are proud members of the Gay and Lesbian Association of Choruses (GALA) and Sistersingers Network.

The Chorus is open to all women who enjoy choral singing. We strive for a diverse membership that represents various backgrounds, lifestyles, interests, and political beliefs. We rehearse from 7 to 9 PM on Tuesdays at ERUUF. No audition required. Visit www15.brinkster.com/commonwoman/index.html or send us an e-mail at CWCofNC@aol.com or commowomanchorus@yahoo.com to find out more.

The Common Woman Chorus, PO BOX 51772, Durham NC 27713.